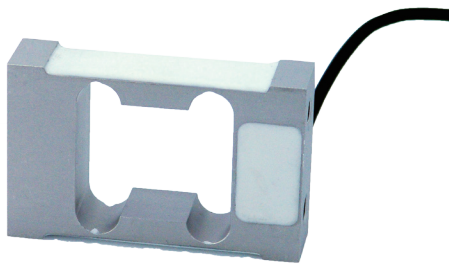


L6H5



- Aluminium-Alloy IP65 single point load cell
- Colourless anodized
- Suitable for single or double load cell structured platform scales
- Recommended platform size: 200 x 200 mm



test certificate no. TC7839 Revision 0
C of C no R60/2000-NL1-10.23

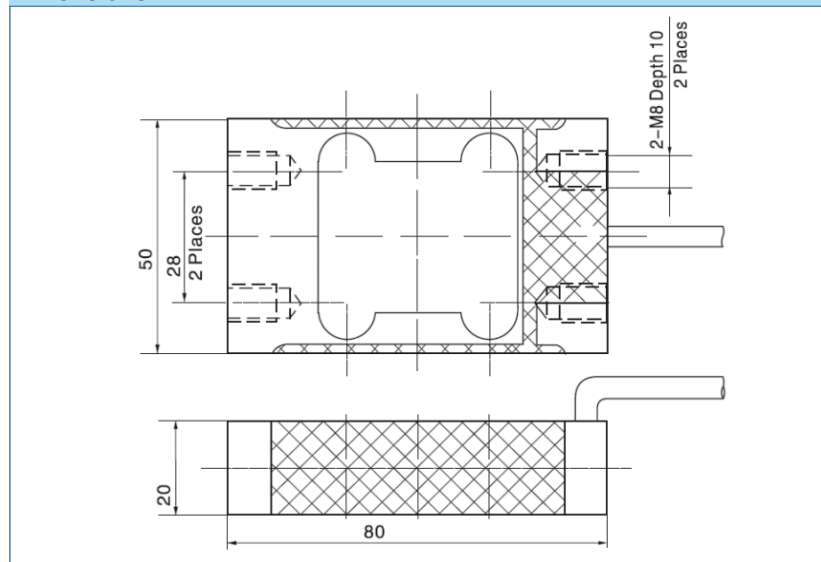
Available models

Capacity	Accuracy	Full article description
4 kg	C3	L6H5-C3-4kg-0.5B
5 kg	C3	L6H5-C3-5kg-0.5B
6 kg	C3	L6H5-C3-6kg-0.5B
8 kg	C3	L6H5-C3-8kg-0.5B
10 kg	C3	L6H5-C3-10kg-0.5B
20 kg	C3	L6H5-C3-20kg-0.5B
30 kg	C3	L6H5-C3-30kg-0.5B

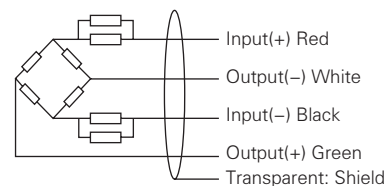
Specification

Accuracy class		OIML R60 C3
Output sensitivity (= FS)	mV/V	2.0 ± 0.2
Maximum capacity (E _{max})	kg	4, 5, 6, 8, 10, 15, 20, 30
Maximum number of load cell intervals (nLC)		3000
Ratio of minimum LC verification interval $Y = E_{max} / V_{min}$		15000
Combined error	%FS	± 0.02
Minimum dead load	of E _{max}	0%
Safe overload	of E _{max}	120 %
Ultimate overload	of E _{max}	150 %
Zero balance	%FS	± 2.0 %
Excitation, recommended voltage	V	5 ~ 12(DC)
Excitation maximum	V	18(DC)
Input resistance	Ω	406 ± 6
Output resistance	Ω	350 ± 3
Insulation resistance	MΩ	≥ 5000 (50VDC)
Compensated temperature	°C	-10 ~ +40
Operating temperature	°C	-35 ~ +65
Storage temperature	°C	-40 ~ +70
Element material		Aluminium
Recommended torque on fixation	N.m	M8: 25
Ingress protection (according to EN 60529)		IP65

Dimensions in mm



Wiring



- Shielded, 4 conductor cable.
- Cable diameter: $\Phi 3.8\text{mm}$.
- Standard cable length: 0.5m.
- Shield not connected to element.
- Cable jacket in PVC.